

Technical description VS6

Sweeper VS6/2 Edition „DU“
BROCK Kehrtechnik GmbH

Version: 1.0
Revision: 1.0
Date: 05.06.2019
Language: English

BROCK Kehrtechnik GmbH
Salinger Feld 10a
D-58454 Witten

www.brock-kehrtechnik.de



1. Debris hopper



Dirt container approx. 6 m³ with integrated Water tank

Dirt container base (4mm thickness)
Sides and center partition (4mm thickness) in stainless-steel (1.4301)
All other steel sheets (4mm, material St 52-3) with special-protective coating (corrosion protecting)

Integrated water tank with 1700 l volume of water and water drain

Large hatch door with integrated seal and smooth contour for easy emptying and cleaning



Eccentric hatch door lock is easily adjusted



Hopper pivot on edged auxiliary frame;
exhaust air distribution in the area of the auxiliary frame

Engine compartment with noise-insulating material



Pneumatic slider at debris hopper



Observation hatch on the left, accessible via steps and handles (in compliance with national accident prevention regulations - UVV in Germany)

Manual tipper pump



Dirt slide made of 1.4301 stainless steel

2. Electrical control system

Main control console positioned right of driver's seat

Water level indicator

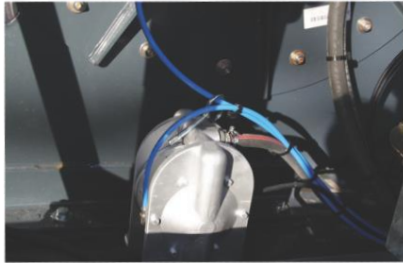


2x working lights in LED
1x sweepgear left
1x sweepgear right

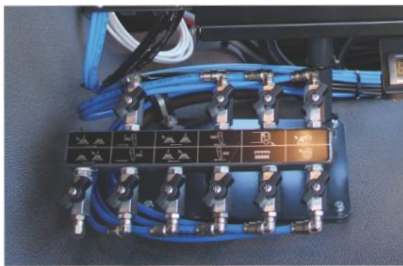


Miniature operator console at the left door

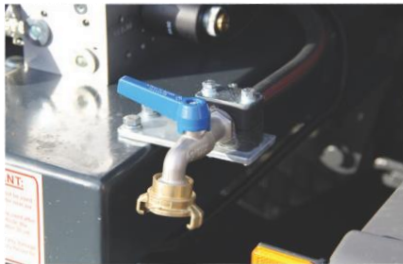
3. Water system



(R 1½) water pump, suppressible (membrane pump)
dry-run safe



Water valves, manually operated from driver's cab



Water filter cleaning connection with spray hose,
right (GEKA coupling)



**High pressure washer 150 bar 15 l incl. hand spray
gun with hose retractor 12m**



Two nozzles for the conical brush; three nozzles inside the suction duct, five nozzles in front of the cylindrical roller brush

Two additional nozzles above the suction duct

Water bar at bumper

4. Fan unit



Large-volume fan 280 m³ air volume driven by v-belt and auxiliary engine

Wear protection in the fan housing (Pu-Layer)

Impeller made out of N-A-XTRA

High pressure cleaning nozzle for fan cleaning

5. Hydraulic system

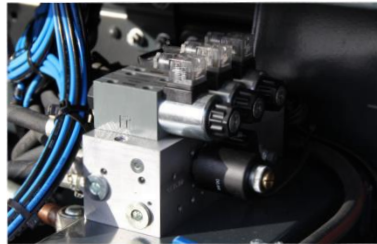
Driven by auxiliary engine Mercedes Benz 129 kW, Euromot III A

- Hopper tilting
- Operation of sweeping gear
- High pressure water pump
- Ventilator
- Low pressure water pump



Two **hydraulic cylinders** for hopper hatch door **(opening and closing)**.

Two **hydraulic cylinders** for hopper hatch door **(locking and unlocking)**



All actuation is via **electric hydraulic valves**



One **hydraulic motor** for the **conical brush**:
Low model series enables sweeping beneath guardrails.

6. Sweeping and suction assembly



1x **suction unit** is fitted on the right side with one Ø 700 mm conical brush;

1x **suction unit** is fitted on the left side with two Ø 700 mm conical brush;

Pushed brushes

raising is by means of a pneumatic cylinder

Automatic locking in the raised state

Automatic raising of the sweeper unit with selection of the reverse gear

650 mm wide suction duct with a pneumatically actuated, two-speed coarse material pick-up gate

stepless number of revolutions



Concurrent work with both aggregates

Extendable and retractable sweepgear in sweepmode

7. Cylindrical roller brush



Ø 400 mm, 1,500 mm long with polypropylene bristles

Pivoting left and right

Version: pulled with swivelling device

suspension raising and pressing is by means of a pneumatic cylinder

adjustment of the pressure, stepless speed adjustment

8. Rear suction hose



Rear suction hose

Pneumatic lifting

Pneumatic slide gate valve

Hoses in rubber

9. Noise insulation

Low noise emission by noise insulation lining material in non-fire-endangered areas and through newly developed, significantly more effective suction and exhaust ducting system

10. Sweeping widths

See attached drawings

11. Dimensions

See attached drawings

12. Technical documentation

- 2x Operating Manual with spare part lists
- 1x Service-Booklet

13. Further Details

- Superstructure is prepared to mount onto a suitable truck chassis
- One-colour standard paint finish